



HK Co.,Ltd.

Gadong F1 669-2 Sinwol-ri, Chowol-eup,
Gwangju-si, Gyeonggi-do, 464-864, Korea
TEL : 82-31-798-1577 FAX : 82-31-798-1588
homepage : <http://www.hkmedical.co.kr>
e-mail : ljbsyb10@hanmail.net



Global Health Evolution
Company HK

www.hkmedical.co.kr

 **HK Co.,Ltd.**

Specialized company fo
manufacture of medical devices





Contents

- Greetings 04 •
- Certificates 04 •
- Company History 05 •
- Technology 06 •
- Product Information 16



Company Introduction

Greeting

HK was founded in 1993. With mega production and technological capabilities, HK has contributed to the domestic industry of medical devices for home use through domestic OEM, export, and technology support. This enabled HK Co., Ltd to become a center axis of the medical device market through the superior products it offers..

We were able to enhance longevity through the development of medicine, but finding the causes of diseases and preventing them have always fallen short. The HK R&D team has based their studies on nature and natural healing and treatment methods. Through many years of research and experiments, the team worked on improving the physical constitution of oriental medicine and combined with the most advanced technology of western medicine, they focused on developing technology for advanced medical devices. . The HK R&D team also introduced the nano method and applied nano technology in maximizing anions and improving penetration of far infrared rays.

Thank you

HKCo., Ltd
CEO Lee Jea Bong

Certificates

 <p>벤처기업확인서</p>	 <p>의료기기 제조 및 품질관리기준 적합인정서 (Certificate of GMP)</p>	 <p>회원증</p>	 <p>Certificate of Registration 품질경영시스템인증서</p>	 <p>EMC TEST REPORT OF CE CONFORMANCE</p>
Letter Patent	Letter Patent	Letter Patent	Letter Patent	Letter Patent
 <p>특허증</p>	 <p>특허증</p>	 <p>표창장</p>	 <p>CLEAN 사업장 인정서</p>	
Letter Patent	Letter Patent	Award	Clean Workplace Certification	

History

- 1993.01 Hankawng Medical Devices established
- 1996.08 Acquired medical device manufacturing business license from the Korea Food & Drug Administration (KFDA)
- 1998.09 Acquired ISO 9001 from the Korea Productivity Center Quality Assurance
- 1999.10 Acquired ISO 14001 from the Korea Productivity Center Quality Assurance
- 2001.03 Joined KITA (Korea International Trade Association)
- 2002.03 Acquired medical device manufacturing license from KFDA (02-202)
- 2003.03 Acquired medical device manufacturing license from KFDA (HK-2003)
 - 10 KFIA tested and confirmed anion and far infrared rays of HK
- 2004.01 Established industry-academic cooperation with Tongwon
 - 05 Completion of the Gyeonggi-do Gwangju Mega Manufacturing Plant and relocation was facilitated
- 2005.03 Personal Assorted Stimulator Mat Patent acquired
 - 04 Acquired the European Commission Electrical Safety Certification (CE)
 - 05 Received the Environment Friendly Business Achievement Award
 - 05 Small & Medium Business Administration (SMBA) New Tech Venture Company Certification
- 2007.01 Technology Inno-Biz Certification (SMBA)
- 2008.01 KFDA GMP Certification
- 2009.08 Barona trademark registered
 - 09 HK Co., Ltd established
- 2010.06 Acquired Corporate R&D Center Certification (Korea Industrial Technology Association (KOITA)
 - 08 Acquired ISO 9001 (ICR)
 - 10 President Jong Su Han Gyeonggi-do office received an award certificate
 - 11 Venture Company Certification (Korea Technology Finance Corporation)
- 2011.11 Received Gyeonggi Small & Medium Business Administration Commissioner Award (Information Technology)
 - 2012.03 Clean Workplace Certification (Korea Occupational Safety and Health Agency)
 - 2012.05 Obtained patent for the manufacturing method of silicon for heating wire
 - 2012.06 Designation as Promising Export Small & Medium Business.





Kiyoseki stone

1. What is Kiyoseki stone?

Kiyoseki stones are found in mines and formed by high-temperature hydrothermal alteration such as the diastrophism 65 million years ago. It is a special mineral packed with the energy of nature

2. Effects of Kiyoseki stone

- Kiyoseki stone is used in water
 - a. it produces healthy water
 - b. it produces regenerated water
- Removes harmful waves if placed next to electronic devices.
- Removes bad odors and maintains freshness if placed in a refrigerator.
- Used as a deodorizing agent when placed in the closet to keep your clothes fresh-smelling.
- Anion generating ceramic helps with air purification for better and cleaner air.
- If anion generating ceramic is placed in vases with flowers, the flowers won't wither easily.
- If the Kiyoseki stone is rubbed on the skin, it enhances the immune system through better blood circulation, facilitates skin rejuvenation, and reduces pain such as shoulder pain and neuralgia.



biotite

1. What is biotite?

It is a mineral with a monoclinic crystal system (one of the crystal systems, crystal with three pairs of vectors of unequal length where two pairs of vectors are perpendicular, while the third pair makes an angle other than 90°) and forms tubular or squamiform displaying a hexagonal or rhombohedron shape. It appears black, brown, or greenish black and its split-face has a pearly or sometimes metallic luster.

2. Effects of Biotite

- Biotite was ranked as the best among 10,000 medicinal ingredients in the medicine scriptures (Hyangyakjipseongbang) written during the King Sejong Era. Biotite rough stones contain germanium which was believed to be a mystical mineral and was accessible only to the royal families or noblemen.
- Also, Biotite has far greater infrared emissivity (94%), 3 times higher than those of red clay and elvan. It is a miracle stone that removes the carcinogenic substances emitted from Chinese natural jade and cement when they are heated. Thus, biotite has been regarded as a medicine stone even before.
- Human experiments showed that it stimulates metabolism and it is effective not only in blood circulation, chronic bronchitis, neurotic gastritis, ulcerative colitis, anemia, arteriosclerosis, diabetes, arthritis, lower back pain and other geriatric diseases, but also in a wide variety of modern diseases. It also stabilizes the five viscera and is good for the eyes and skin. Thus, biotite is drawing attention as a mystical stone.



tourmaline

1. What is tourmaline?

The name, tourmaline comes from the Singhalese word "tormali" which means 'mixed gemstone'. As befitting the meaning of the name, it comes in a wide variety of colors. Tourmaline is native to Brazil and it is known as a birthstone for October as with opal in America.

2. Functions of tourmaline

- It enlarges capillary vessels to stimulate blood circulation, metabolism, bowel movements, and is effective in thermotherapy, fatigue recovery, neuralgia, freckles, and leucorrhea.
- It has antioxidant functions, and there has been a study report that because anions generated by flowing 0.06 mA of electric current and increased far infrared rays break down harmful reactive oxygen and alkalize the body, they are good for headaches and dieting.
- If tourmaline is used in water, the water becomes weak alkaline.
- It removes the chlorine smell in tap water and makes water rich in minerals.
- It stimulates body metabolism.
- It enhances cell functions, immune system, blood purification, and stabilizes the autonomic nervous system.
- It hydrates and moisturizes.



Geumgangyakdol

1. What is Geumgangyakdol?

Geumgangyakdol is a medicinal stone found in the central region of North Korea. It contains about 60 different minerals that are good for health and longevity. It is a mystical stone with deodorizing effects, adheres to heavy metals and has 96% far infrared ray radiation.

2. Effects of Geumgangyakdol

- The medicinal stone is good for gastrointestinal problems and colitis if water is boiled with the stone in it.
- It is effective in treating hepatitis, cholecystitis, nephritis, pancreatitis, and cystitis.
- It has mystical effects in arteriosclerosis, hypertension, heart disease, stroke, and aging because it removes cholesterols, glycolipids, and lipids.
- It prevents pyorrhea and pellagra that are caused by vitamin and mineral deficiency.
- When the stone is placed in the water you will use for bathing and it will soften and keep the skin fresh.
- It is effective in treating eczema, 증가진(정확한 영문명 확인이 필요합니다), housewife's eczema, heat rash, and pruritus if you wash the affected area with the water that was boiled with the stone in it.
- It is good for treating boil and urticaria.
- It is good for preventing cancer.



Cheonkwangsuk

1. What is Cheonkwangsuk?

Cheonkwangsuk means rare element.

The rare earth elements are a set of lanthanides, scandium, and yttrium and most of them have a grey luster.

2. Properties of Cheonkwangsuk

ㄱ. Far infrared ray radiation function

- Far infrared rays have the wavelength most beneficial to the human body ($8 \sim 11\mu\text{m}$) among infrared rays. It penetrates into the deep layer of the skin (7 ~ 8cm depth) and rejuvenates the cells to increase the body temperature. As the body temperature rises, the capillary vessels are enlarged and blood circulation, metabolism, and tissue regeneration are enhanced. Thus, far infrared rays are very effective in promoting growth.

ㄴ. Generation of anions in large quantity

- Anions are found in forests, waterfalls, fountains of meadow parks, and beaches, and when people come in contact with these they feel fresh and relaxed.
- Because anions give their electrons to free oxygen radicals, they prevent overproduction of fatal free oxygen radicals and oxidation of cells (oxygen reduction).



Germanium

1. What is germanium?

Germanium is a medicinal stone that has been an important herbal medicine in treating skin diseases.

According to Bonchodokyung written 900 years ago during the Song dynasty, germanium was used to filter the water that is used in making Chinese crude drugs.

2. Effects of germanium

- a. It controls the flow of bioelectricity.
- b. It functions in dehydrogenation. Cholesterols and toxins in the blood bound to hydrogen ions that acidify the body are expelled as sweat and urine within 20~30 hours. This returns the body to an alkaline state.
- c. It facilitates oxygen delivery. (Germanium itself causes strong oxygenation)
- d. It increases the cells that destroy cancer cells by increasing interferon that suppresses virus in the body.
- e. It is used for skin peeling and drying, dead skin cells, freckles, acne, and other skin diseases.
- f. It has antibacterial, deodorizing, and sterilizing effects
- g. Growth lights (far infrared rays) emission, penetrate deep into the body
- h. providing one with a pleasant sleep, helps in recovery from fatigue, and is used for postnatal care

1. Natural Mineral Rough Stone Milling Process



2. Ceramic pressing process

Process in which the
most advanced ceramic
is molded using PHNT



3. Ceramic firing process

Process in which pyramid
energy ceramic is heated



4. Ceramic finished product

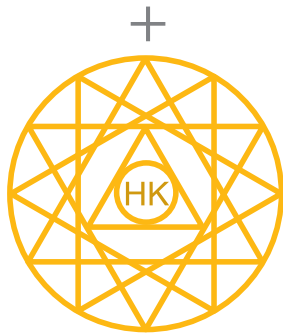


Features of PHE Ceramic

Scientific features of ceramic (PHNT)



Energy of pyramids



Hexagonal energy of Hiranya

=

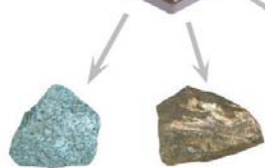


Scientific features of ceramic (PHNT)

1. It is the best nano ceramic created from the principle of pyramidal space energy and energy produced from the cross section triangle of pyramids using the hexagonal energy of Hiranya and the most advanced technology of HK.
2. The three-dimensional structure of a pyramid contains the plane of Hiranya and the figuration of the Hiranya plane is the pyramid.

The fruit of HK Technology

Nano ceramic is created by turning natural mineral substances into ultrafine particles and heating them at a temperature higher than 1300°C. It is designed to emit superior far infrared rays by combining the advantages of Hiranya and pyramid shapes.



Geumgangyakkdol one of three healthy specialties in North Korea (contains the highest amount of minerals in the world)



Biotite The best among 10,000 medicinal ingredients in the medicine scriptures (Hyangyakjipseongbang) written during the King Sejong Era.



Kiyoseki stone emits a lot of anions and far infrared rays



Tourmaline special mineral substance packed with energy



Germanium absorbs harmful substances and releases a lot of minerals



Cheonkwangsuk emits a lot of anions and far infrared rays

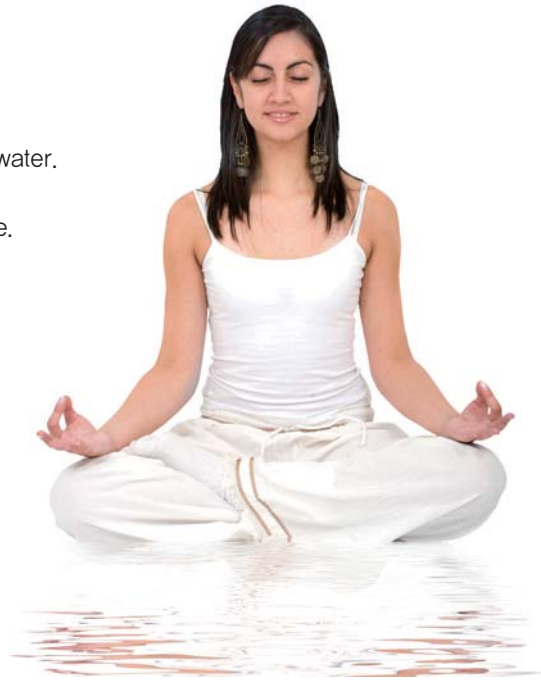
Effects of the Pyramid and Hiranya (P+H)

1. Effects of the Pyramid (p)

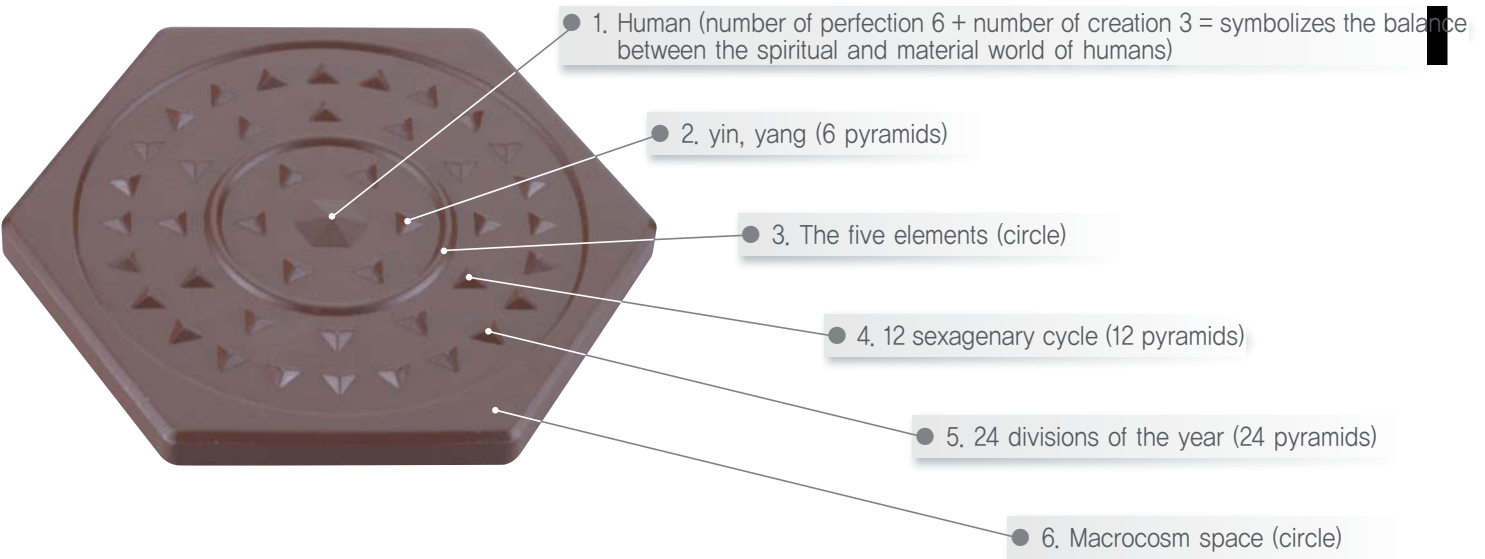
- The energy of a pyramid sharpens a razor blade.
- It changes the molecular structure of water to hexagonal water.
- It promotes germination and growth of plant seeds.
- It prevents spoilage and turns milk into yogurt and cheese.
- Meditating or sleeping in a pyramid revitalizes energy.

2. Effects of Hiranya (H)

- It accelerates the growth of plants.
- Milk placed on the Hiranya shape does not spoil but only dehydrates.
- Fungal and bacterial growths are suppressed on a Hiranya shape.
- It improves concentration.
- It induces positive and active thinking.
- It changes the taste of food.



PHE (Pyramid + Hiranya + Energy)



1. Hexagonal pyramid (symbolizes humans) : 6 pyramids come together and form a hexagonal Hiranya shape. Its condensed energy is released.
2. 6 pyramids (yin, yang) : yin (liver, heart, spleen, lungs, kidney, Simpo = six vicera) + yang (gall bladder, small intestine, stomach, large intestine, bladder, Samcho = six bowels)
3. Circle (the five elements) : yang (Sunday), yin (Monday), the Five elements (Tuesday, Wednesday, Thursday, Friday, Saturday)
4. 12 pyramids : symbolizes the 12 sexagenary cycle
5. 24 pyramids : symbolizes the 24 divisions of the year
6. Circle : symbolizes macrocosm space

* PHE ceramic is a ceramic designed for humans to receive the energy from the great universe through the solar system.

PHE(Pyramid + Hiranya + Energy)?

● HK

1. Triangle (▽) yin : symbolizes energy creation of trinity flowing from the sky to the earth. (Symbolizes women as it creates earth from the sky)
2. Triangle (△) yang : symbolizes the flow of energy from the earth to the sky and returns to the starting point of the universe (symbolizes men)
3. HK exists in a circle that is an unlimited universal space in the number of creation, 3 (pyramid) with the balance of yin and yang. HK is the figuration of a company centered with humans that form dynamic creation.

Features of HK ceramic

1. Features of HK ceramic

- The world' s best ceramic grafted with PHNT
- PHE ceramic is made by a variety of natural minerals nano-grinded using PHNT.
- far infrared ray emission
- Anion release

2.Characteristics of far infrared rays

- Thermotherapy : maintains the optimal body temperature.
- Maturation : promotes growth of the body.
- Magnetic action : maintains the balance of nutrition supply within the body.
- Hygroscopic action : maintains optimal water level in the body.
- Neutralization : promotes excretion of waste materials from the body and neutralizes body odor.
- Resonance : breaks down various nutrients within the body and promotes nutritional balance and metabolism.

3.Effects of far infrared rays

- Obesity : breaks down the lipids within the body and excretes them as sweat so body weight decreases without any side effects and wrinkles or striae do not appear in the area where the lipids are broken down.
- Skin care : effective in removing acne, freckles, age spots, and body odor. It regenerates body tissues and delays skin aging so the skin is firm and fresh.
- Prevention of adult disease and provision of stress relief : Through sweating, waste materials, heavy metals, excess salt, especially urea and carbon dioxide are excreted. It lightens the burden on the kidney and liver and stabilizes the brain waves so it is effective in preventing adult diseases and relieving stress and menstrual cramps.
- Skin healing and immune system enhancement : Very effective in treating skin diseases, enhances the immune system and skin healing.
- Improvement of blood circulation and physical constitution: Because it breaks down clots in the vessels and promotes blood circulation, blood becomes clean and pH is improved so the physical constitution is alkalized.

4.Actions of anions

- Magnetic action : maintains the balance of nutrition supply in the body.
- Neutralization : promotes excretion of waste materials from the body and neutralizes body odor.
- Resonance : breaks down various nutrients within the body and promotes nutritional balance and metabolism.
- Hygroscopic action : maintains optimal water level in the body.

5.Differences between anions and cations

- Magnetic action: maintains the balance of nutrition supply in the body.
- Neutralization: promotes excretion of waste materials from the body and neutralizes body odor.
- Resonance: breaks down various nutrients within the body and promotes nutritional balance and metabolism.
- Hygroscopic action: maintains optimal water level in the body.

classification	When negative ions increasing	When positive ions increasing
Atmosphere	Less humidity and maintain the atmosphere pleasant	High humidity and induce air pollution
Health	Maintain vigorous physical conditions	Become lethargic and cause various diseases
Physical constitution	Alkalescent constitution	Acid constitution
Cells	Excreting wastes smoothly, increase metabolism	Metabolic dysfunction, Waste accumulation

6.Effects of anions

- Improvement of self-recognized symptoms

Applied to	Negative ions	Positive ions
blood	Alkalescence	Neutralization
Heart	Regular heartbeat	Irregular heartbeat
Blood pressure	Stabilize Blood pressure	Increase blood pressure and cause complications
Respiratory	Stabilize respiration and make breathing easier	Accelerate respiration and make breathing more difficult
Blood vessels	Dilate blood vessels and good circulation	Constrict blood vessels and Bad circulation

- Actions of anions in the body

① purify blood ② revive cells ③ control autonomic nervous system ④ enhance immune system

7.Actions of anions in the body

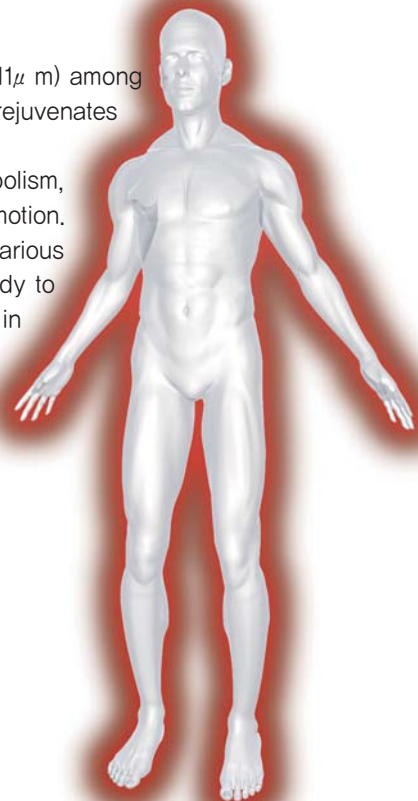
Applied to	Negative ions	Positive ions
Mental operation	Calm, relax, hypnosis	Stimulus, agitation, unpleasant, asomnia
Metabolism	Energy synthesis	Energy consumption
Oxygen secretion	Decrease oxygen secretion	Increase oxygen secretion
Diuretic effect	Promote diuretic effect	Suppress diuretic effect
Constipation	Relieve constipation	Cause constipation
Pulse	Decrease pulse rate	Increase pulse rate
Capillary	Dilate capillary	Constrict capillary
Blood pressure	Stabilize Blood Pressure	Increase Blood Pressure
Body fluid	Alkalescence	Acidification
White blood cells	Increase white blood cells	Decrease white blood cells
Serum(Calcium)	Increase serum	Decrease serum

What is anion?

- Ions are electrically charged invisible particles. Cations are ions with a positive charge while anions are ions with a negative charge.
- There are cations and anions coexisting with various compounds such as carbon dioxide, oxygen, nitrogen, hydrogen and it becomes positively charged when there are more cations and it becomes negatively charged when there are more anions.
- Generally, there are a lot of cations in polluted air and anions are largely distributed in forests, beaches, and valleys where the air is free-flowing. In addition, a weak person will develop chronic diseases and preexisting diseases will worsen in air that is rich in cations.
- On the contrary, if there are a lot of anions, cells are activated and the resistance to diseases increases and the body becomes mildly alkaline and healthy.
- Far infrared rays have the wavelength most beneficial to the human body ($8 \sim 11\mu\text{ m}$) among infrared rays. It penetrates into the deep layer of the skin ($7 \sim 8\text{ cm}$ depth) and rejuvenates the cells to increase the body temperature.
- As the body temperature rises, the capillary vessels are enlarged and blood circulation, metabolism, and tissue regeneration are enhanced. Thus, far infrared rays are very effective in promoting growth.
- Especially when sweat is excreted by means of decreasing body temperature, various toxins, waste materials, heavy metals are excreted and changes our acidified body to a healthy alkaline type and because it relaxes the mind and body, it is effective in relieving stress that can cause various diseases.

What are far infrared rays?

- Far infrared rays have the wavelength most beneficial to the human body ($8 \sim 11\mu\text{ m}$) among infrared rays. It penetrates into the deep layer of the skin ($7 \sim 8\text{ cm}$ depth) and rejuvenates the cells to increase the body temperature.
- As temperature increases, capillary vessels enlarge and blood circulation, metabolism, and tissue regeneration are enhanced causing significant effects on growth promotion.
- Especially when sweat is excreted by means of decreasing body temperature, various toxins, waste materials, heavy metals are excreted and changes our acidified body to a healthy alkaline type and because it relaxes the mind and body, it is effective in relieving stress that can cause various diseases.

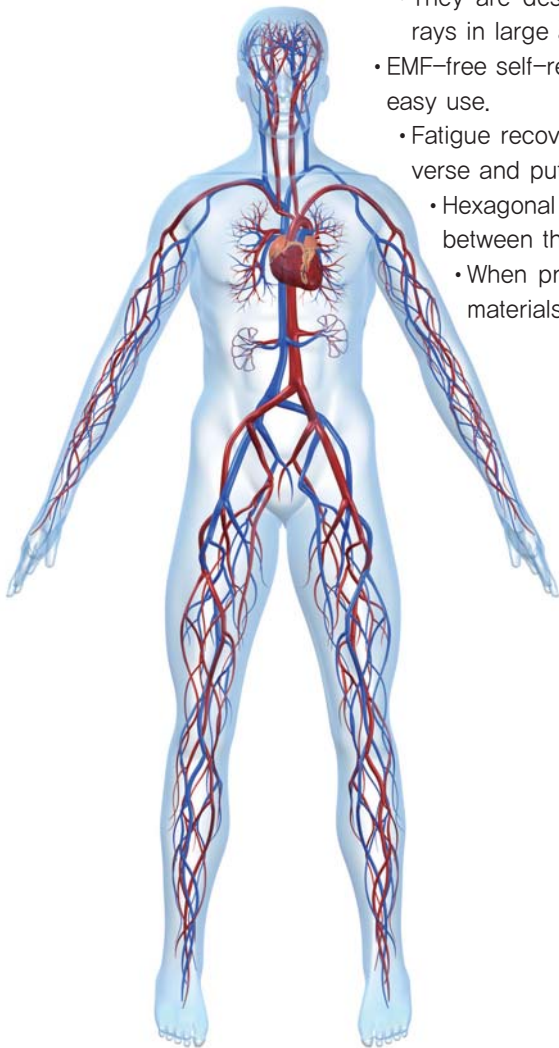


NT : nano-technology?

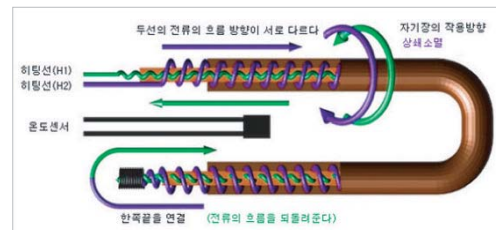
NT : nanotechnology refers to all the technology that creates a system or device that has entirely new properties and functions by manipulating matter on the atomic or molecular levels.

Since the size of an atom is 0.1~0.5 nanometer, it is about the size of three or four atoms aligned and it is about the size of protein (1~20nm) in our body. Also nanometer is about the size of one thousandth of a micrometer (μm) used in micron technology of a current semiconductor production process. Likewise, the world of nano is the world of atoms or molecules. Nanotechnology didn't get any attention from the scientific technicians as an uncharted territory that can't be seen even with highly advanced microscopes. The new era of nanotechnology began as atoms and molecules became visible and as manipulation of atoms and molecules became possible through STM; Scanning Tunneling Microscope developed by G. Binnig and H. Rohrer of IBM in 1981.

Features of HK Barona products



- They are designed to have abundant minerals and emit anions and far infrared rays in large amounts by mixing 6 different minerals with an optimal mixing ratio.
- EMF-free self-regulating heating cables are used in all thermal products allowing for easy use.
- Fatigue recovery and treatment are maximized by collecting energy from the universe and putting it into the human body using the PHE system.
- Hexagonal ceramic is attached tightly so that foreign substances do not get in between the ceramics keeping it clean despite long-term use.
- When products are finished, 2 types of color fibers are selected as finishing materials making the product visually appealing.



Electric field free self-regulating heating cables are adopted.



Global Health Evolution Company HK

Product Information

Barona Quantum 18 • Barona 19 •
Alkaline ionized water generator 20 • Massage chair 21 •
Electric sauna device 22 • HOT mat 23 • Hot mat (for one person) 23 •
Portable hot fomentation device 24 • Portable hot fomentation device 24 •
Sofa hot fomentation device 24 • Waist hot fomentation device 24 •
Abdomen hot fomentation device 25 • Shoulder hot fomentation 25 •
Sitting cushion hot fomentation device 26 • Health pillow 26 •
Wooden pillow 26 • Ceramic pottery set 26 •
Barona cup 27 • No-heat waist reinforcement binder 27 •
No-heat sitting cushion 27 • Knee support 27 •
HK- II Repairing cream 28 • HK- II Essence cream 28 • Natural soap 28 •
Functional antibacterial soap 29 • Amitie beauty soap 29 •
Ceramic Powder 29 • Health socks 29 •
Functional toothpaste 30 • Alkaline water bottle (600ml, 1500ml) 30 •
PHE Ceramic 31 • Ceramic Health bracelet 31 •





Barona Quantum(double)

- Model :
- Rating : 220V 500W 60Hz
- Size : 2000mm×1530 mm×70mm

Far-infrared rays are maximized using Barona quantum ceramic and it maintains normal body temperature by emitting protons of quantum energy.

1. Improves circulation
2. Enhances the function of lymphocytes and endocrine cells.
3. Rapid healing of injuries and sprain and relieves pain.
4. Good for skin rash or other skin diseases.
5. Post-operative recovery period is shortened.



Barona Double(double)

- Model :
- Rating : 220V 500W 60Hz
- Size : 2000mm×1450mm×60mm

Barona that combined PHE ceramic with thermal, low frequency and transposition function turns natural mineral into ultrafine particles using nanotechnology and creates nano ceramic with a temperature higher than 1300°C. It is designed by combining the powers of the Hiranya and Pyramid shapes to emit superior far-infrared rays. It improves blood circulation

Barona(single)

- Model :
- Rating : 220V 250W 60Hz
- Size : 2000mm×1000mm×60mm



Alkaline ionized water generator

Nano hydrogen reduced water, as a product of natural regeneration method and alkaline water producing ionizer that includes existing water filtering function produces small water molecules that are absorbed rapidly into the body and helps improve chronic diarrhea, hyperacidity, abnormal fermentation in the stomach and indigestion. In addition, it eliminates free oxygen radicals and waste products in the body.

● What is free oxygen radical?

Human body maintains its life using the energy acquired from breathing in oxygen. This is done through various metabolism processes and during these processes reactive oxygen species, free oxygen radicals are created. They oxidize and damage cells and are sometimes called toxic oxygen.

● Characteristics of alkaline ionized water

1. Cluster of water molecules is small enough to be absorbed by the body rapidly.
2. It has abundant alkaline minerals from spontaneous reduction method.
3. It is designed to bear a close resemblance to natural bedrock water.
4. Both hot and cold water can be obtained and hot water can be set at various temperatures.
5. It has UV rays sterilizing function and is good for family use.



- Model : HK-2400
- Rating : 220V 420W 60Hz
- Size : 340mm×410mm×450mm



Massage chair

- Model :
- Rating : 220V 220W 60Hz
- Size :

It is an ergonomically designed operating structure for the back and it provides the best kind of massage for the entire body.



Electric sauna device



- Model : HK-2500
- Rating : 220V 500W 60Hz
- Size : 2200mm×830mm×800mm

It breaks down body fat and creates a firm body shape. In addition to helping in the cure of several female diseases, it is effective in skin care by emitting far-infrared rays deep into the body.

HOT mat



- 모델명 :
- Rating : 220V 400W 60Hz
- Size : 1260mm×2000mm×10mm

This product is easy to use and can be placed anywhere in the house. It provides warmth during winter and coolness during summer.



Hot mat (for one person)



- Model : HK-2000
- Rating : 220V 400W 60Hz
- Size : 1000mm×2000mm×30mm

Existing mats available in the market consume a lot of electricity to heat up the entire mat but with this newly developed floor mat, energy is saved with the built-in temperature control for both the top and bottom parts, heating only the parts needed.



Portable hot fomentation device



- Model : HK-1900
- Rating : 220V 190W 60Hz
- Size : 800mm×1800mm×30mm

It is little bit smaller than the single size and good for one person.

Portable hot fomentation device



- Model :
- Rating : 220V 190W 60Hz
- Size : 700mm×1550mm×10mm

It is easy to carry around for use.

Sofa hot fomentation device



- Model : HK-1800
- Rating : 220V 100W 60Hz
- Size : 7500mm×1400mm×10mm

It is made up of PHE heat-storing ceramic with maximized far-infrared rays and is convenient to use while watching TV or reading books.

Waist hot fomentation device



- Model : HK-200
- Rating : 220V 100W 60Hz
- Size : 220mm×1120mm×10mm

By emitting far infrared rays and anions, it helps relieve pain in the lower back or abdomen or discomfort from irregular menstruation, constipation, and diarrhea.



Abdomen hot fomentation device

- Model : HK-300
- Rating : 220V 100W 60Hz
- Size : 480mm×780mm×10mm

1. With the far-infrared rays and large amounts of anions emitted, it is very effective in relieving pain in the lower back or shoulder or fatigue. It also improves blood circulation.
2. Sitz bath function of far infrared rays prevents female functional disorders and postmenopausal syndrome and also maintains cleanliness.
3. It keeps the feet warm and by applying far infrared ray heat fomentation and acupressure on the soles of the feet, it delivers heat directly to the core of the body, promoting blood circulation and metabolism.
4. It improves blood circulation by emitting far-infrared rays and its thermotherapy effect is helpful for people who have cold and numbness in their knees.
5. It is helpful for those with a cold abdomen, irregular menses, constipation, or diarrhea.



Shoulder hot fomentation

- Model : HK-400
- Rating : 220V 100W 60Hz
- Size :

1. With the far-infrared rays and large amount of anions emitted, it is very effective for those with frequent pain in the upper back or shoulder or for those who get tired easily. It also improves blood circulation.
2. Sitz bath function of far infrared rays prevents female functional disorders and postmenopausal syndrome and maintains cleanliness.
3. It keeps the feet warm and by applying far infrared ray heat fomentation and acupressure on the soles of the feet, it delivers heat directly to the core of body, promoting blood circulation and metabolism.
4. With acupressure therapy and far infrared ray emission, it enhances blood circulation and prevents cold hands and feet due to thermotherapy effects.



Sitting cushion hot fomentation device



- Model : HK-1700
- Rating : 220V 100W 60Hz
- Size :

Sitz bath function of far infrared rays prevents female functional disorders and postmenopausal syndrome and also maintains cleanliness. It is good for students or office workers who work long hours seated.

Health pillow



- Model : HK-100
- Size :

It is a product that is ergonomically designed and keeps the bed comfortable. Using PHE ceramic, it helps with blood circulation and keeps the cervical vertebrae straight by evenly distributing pressure. Resting the head on the wooden pillow provides acupuncture therapy effect. This product helps with blood circulation so it is good for those with stiff necks.

Wooden pillow



- Model : HK-3100
- Size :

This product helps with blood circulation so it is good for those with stiff necks.

Ceramic pottery set



- Model : HK-2100
- Size :

It is made with PHE ceramic powder and it keeps the food fresh by emitting far-infrared rays and anions. It enhances the natural taste of food. It is easy to clean and it constantly emits far-infrared rays and anions allowing you to feel the taste of food in nature.

Barona cup



- Model :
- Size :

You can enjoy the natural taste of water with PHE powder.

No-heat waist reinforcement binder



- Model : HK-1600
- Size :

It is helpful in correcting the lower back position and enhances blood circulation. It is good for housewives who work long hours standing and students who sit for long periods of time.

No-heat sitting cushion



- Model : HK-2600
- Size :

This product, made with natural minerals, is helpful for students and office workers who remain seated for long periods of time or for those who drive long hours.

Knee support



- Model : HK-2700
- Size :

You can feel refreshed by with the anions emitted and the high thermal efficiency of far infrared rays promotes metabolism and energy. It is suitable for those with knee pain or for those who exercise.

HK- II Repairing cream



- Model : HK-2900
- 규 격 :

The repairing cream protects skin from changes that occur with aging and prevents skin troubles caused by pollution and excess stress. It also enhances skin function and alleviates stress.

HK- II Essence cream



- Model : HK-1500
- 규 격 :

1. Patented PLM +CS composite improves the skin tone and tightens the skin.
2. Red ginseng ingredient increases the moisturizing effects and natural plant extracts improve blood circulation and provides nutrition to skin making it firm and tight.
3. Improves wrinkles and has excellent whitening effects.
4. Absorbed by the skin fast and keeps it moisturized for a long time
5. Hypoallergenic skin patch test is completed.

Direction

After washing the face, apply skin toner. Apply an appropriate amount of cream on the face and neck gently and let the skin absorb the water drops that appear as you apply the cream.

Natural soap



- Model :
- 규 격 :

Made from natural minerals and (PHE) natural vegetable oil, it emits strong far-infrared rays and anions that improve blood circulation by enlarging the capillary vessels. When used, it improves oxygen and moisture supply to skin cells.

Functional antibacterial soap



- Model : HK-500
- 규 격 :

Barona antibacterial soap removes waste products in the outer skin layers and pores, maintaining a clear and clean skin.

Amitie beauty soap



- Model : HK-3000
- 규 격 :

Beauty soap HK - 3000 does not irritate the skin and moisturizes it while keeping it clean and clear.

Ceramic Powder



- Model :
- 규 격 :

Due to the effects of far-infrared rays, it prevents gum disease if you brush your teeth with it and the abundant natural minerals make the skin soft and smooth if used while bathing.

Health socks (male, female)



- Model : HK-700, HK-800
- 규 격 :

The anion emission provides freshness and the high thermal efficiency of far-infrared radiation increases metabolism and promotes vitality. It is a product that can be used by everyone.

Functional toothpaste



- Model : HK-600
- 규 격 :

By adding natural minerals and ultrafine particles created through PHE nanotechnology, it is effective in preventing gum disease (gingivitis, periodontitis) and cavity and removing plaque. Mouth odor is also eliminated because of the natural minerals and PHE method.

Effects

1. Whitens and strengthens teeth.
2. Maintains cleanliness and freshness of the mouth.
3. Prevents cavity and eliminates odor.
4. Prevents periodontitis, gingivitis, pyorrhea alveolaris.
5. Prevents plaque formation.
6. Effective in removing plaque.

Alkaline water bottle (600ml, 1500ml)



- Model : HK-2300, HK-2200
- 규 격 :

Creates water good for the body with the natural reduction method, mixing hydrogen reducing materials and natural minerals. Easy to carry around especially during workout.

▲ HK-2200

HK-2300 ▶



PHE Ceramic



● Model : HK-2800

● 규 격 :

PHE deodorizing ceramic

It is a product with superior deodorizing effects.

1. If placed inside a car, it eliminates odor and dampness.
2. If placed inside a refrigerator, it eliminates food odor.
3. If placed inside a closet, it keeps clothes dry and eliminates odor.
4. If placed inside a shoe rack, it eliminates musty odor.
5. If placed inside kitchen sinks, it eliminates mold and odor.

PHE Ceramic

PHE ceramic has superior acupressure treatment effects and is good for enhancing circulation with the large amount of far-infrared radiation emitted. It also has excellent acupressure treatment effects and can be used on all parts of the body.

1. For people with cold hands and feet, press the PHE ceramic on the affected parts.
2. For people with abdominal pain, cold abdomen, irregular menses, constipation, or diarrhea, place PHE ceramic on the abdomen before sleeping.
3. For people with shoulder pain, press the PHE ceramic on the affected part.
4. For people with lower back pain, press the PHE ceramic on the lower back.
4. For people with knee pain, press the PHE ceramic on the affected part.
5. For bruises, press the PHE ceramic on the affected parts to alleviate the pain.

Ceramic Health bracelet



● Model : HK-900, HK-1000, HK-1100, HK-1200, HK-1300, HK-1400

● 규 격 :

PHE deodorizing ceramic

It is a health bracelet made with PHE ceramic. It helps students who need to concentrate, people who use cellular phones excessively, people who often feel pain on the wrist or the shoulder, people who work out a lot, or those who have trouble sleeping soundly.

